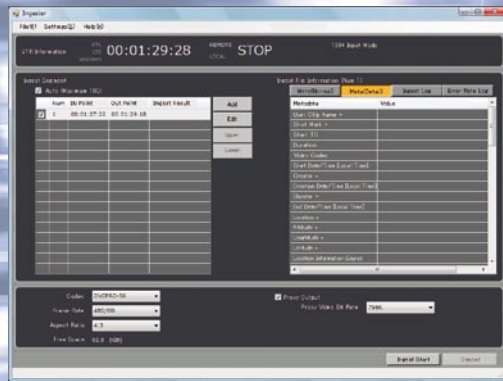
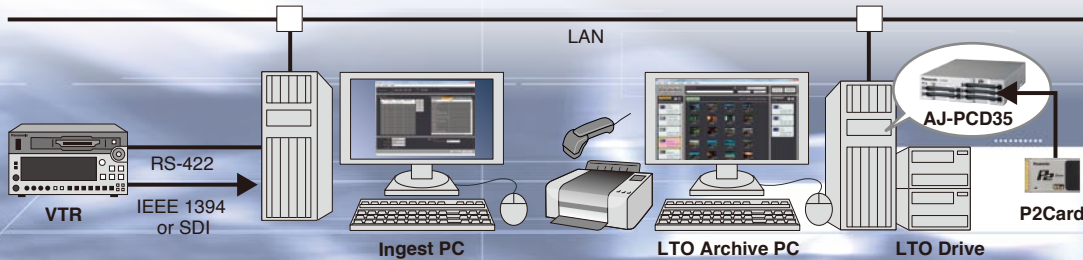


Preliminary



AJ-SF110 Screenshot  
(under development)



AJ-SF100 Screenshot  
(Under development)

## Archives P2, AVCHD\*<sup>1</sup> and VTR Footage\*<sup>2</sup> onto LTO, and Enables Meta Searches, Direct Playback and Partial Retrieve from Archived Files

AJ-SF100 and AJ-SF110 software bring intelligent archive solutions to the P2 workflow. Using large-capacity, high-speed-transfer Linear Tape-Open (LTO) media, they let you play and retrieve selected segments without having to replicate the LTO media to a hard disk drive (HDD).

They support the ingestion of all P2 files, AVCHD files\*<sup>1</sup> and VTR footage. \*<sup>2</sup> Plus, in addition to LTO, they can use Blu-ray Disk (BD)\*<sup>1</sup> and HDD as storage media, thus allowing the configuration of a flexible system with advanced functions.

### AJ-SF100 LTO/BD\*<sup>1</sup> Archive Software

AJ-SF100 software is installed onto a PC connected to an LTO drive, BD drive\*<sup>1</sup> and removable HDD. It lets you archive, search, retrieve and play all P2 files and AVCHD files.\*<sup>1</sup>

- Proxy data can be generated and metadata can be edited while archiving. Content can be searched easily by using metadata and proxy video.
- Video clips archived on LTO media can be directly played back.
- Any desired video segment can be selected and copied to another file. The video segment can be specified with IN/OUT marks added during playback.

### AJ-SF110 Video Ingest Software

This software converts VTR footage (HD/SD) to MXF files via an IEEE 1394\*<sup>3</sup> interface for AJ-SF100 archiving.

- VTR materials recorded with DVCPRO, DVCPRO 50 or DVCPRO HD systems can be converted to files, without encoding, via the IEEE 1394 interface.
- Video input via SDI terminal can be converted to a P2 file. SD video is converted to DVCPRO or DVCPRO 50, and HD video can be converted to DVCPRO HD or AVC-Intra (50 or 100 can be selected).
- Metadata can be added. VTR conversion footage can also be input with new metadata.
- By linking with the AJ-SF100 LTO/BD\*<sup>1</sup> Archiving Software, the video ingest software ensures smooth previewing, metadata editing and archiving.

\*<sup>1</sup>: Future compatibility planned. \*<sup>2</sup>: Requires ingesting by AJ-SF110. \*<sup>3</sup>: Supports only HD: DVCPRO HD, SD: DVCPRO 50/DVCPRO/DV. HDV input and MPEG-TS input are not supported.

## Specifications

### AJ-SF100 LTO Archive Software

#### [Functions]

- Video loading: P2/AVCHD files\*1, P2 Card/HDD/SD Card
- Metadata: Editing, input, proxy video generation
- Archiving format:
  - OP-1a format: Saves to LTO4 or LTO5
  - P2 / AVCHD format: Saves to HDD or BD\*2
- Search, play: Data Base metadata search, LTO direct playback, proxy playback, copy segment selection
- Restoration: P2 data restoration, selected segment restoration, LTO duplication

\*1: Future compatibility with AVCHD files is planned.

\*2: Future compatibility with BD drive is planned.

#### [Hardware Required for System Configuration]

PC, P2 drive, Storage device such as LTO drive, BD drive\*, P2 drive or HDD

\*Future compatibility planned

#### [Software Required for System Configuration]

SQL Server 2008 Workgroup Edition

#### [Operating System]

Windows 7 Professional SP1 64 bit (English)

#### [Recommended Environment]

- CPU: Xeon X5670 2.93 GHz or faster
- Main RAM: 8 GB
- A PC operation confirmed by Panasonic: Hewlett-Packard HP Z800 Workstation

### AJ-SF110 Video Ingest Software

#### [Functions]

- Ingest: Video ingesting via IEEE1394 or SDI
- Convert: Converting the footage to DVCPRO, DVCPRO 50, DVCPRO HD, AVC-Intra 50 or AVC-Intra 100 in P2 file format.
- VTR control: IN/OUT points are specified via RS-422 remote for loading.
- VTR error rate monitoring record (via RS-422 Remote)

#### [Hardware Required for System Configuration]

PC, HD/SD SDI board, HDD drive

#### [Operating System]

- Compatible OS: Windows 7 SP1 Professional 64 bit (English)

#### [Recommended Environment]

- CPU: Xeon X5670 2.93 GHz or faster
- Main RAM: 2 GB
- A PC operation confirmed by Panasonic: Hewlett-Packard HP Z800 Workstation

## Reference Data

Recording Time per LTO (1.5 TB) Tape      Recording Time per BD (50 GB) Disc\*1

	Codec	Rec. Time		Codec	Rec. Time
SD	DVCPRO	Approx. 96 hours	SD	DVCPRO	Approx. 3 hour 20 min.
	DVCPRO 50	Approx. 48 hours		DVCPRO 50	Approx. 1 hour 40 min.
HD	DVCPRO HD	Approx. 24 hours	DVCPRO HD	Approx. 50 min.	
	AVC-Intra 50	Approx. 48 hours	AVC-Intra 50	Approx. 1 hour 40 min.	
	AVC-Intra 100	Approx. 24 hours	AVC-Intra 100	Approx. 50 min.	

\*Approx. 180 hours per LTO (1.5 TB) tape or approx. 6 hours per BD (50 GB) disc can be archived in the case of AVCHD (compatibility planned, in HG mode: approx. 13 Mbps).

\*1: Future compatibility planned.

#### An Example of LTO/BD\* Archiving System Configuration

Hardware/Software	Units	Remarks
LTO Archiving Software	1	
PC (Work Station)	1	
BD Drive*	1 or 2	
LTO5 Drive/SAS HBA	1 or 2	
RAID Drive	1	with RAID card
Printer	1	for barcode/BD-R* label printing (using printable media)
Bar Code Reader	1	for media management (USB I/F, keyboard connecting type)

\*Future compatibility planned.

#### Comparison of LTO and BD\* data storage media

	LTO5	BD-R*
Capacity	1.5 TB	50 GB
Transfer Speed (Maximum value)	140 MB/s = 1,120 Mbps	216 Mbps (half to write)

\*Future compatibility planned.

#### Example of P2 ingest system configuration

Hardware/Software	Units	Remarks
Video Ingest Software	1	
HD/SD SDI board	1	
RAID Drive	1	with RAID card
PC (Work Station)	1	with IEEE 1394 board

# Panasonic®

#### [Countries and Regions]

Panasonic Corporation  
 Digital Imaging Business Group  
 2-15 Matsuba-cho, Kadoma, Osaka 571-8503  
 Japan  
<http://pro-av.panasonic.net/>

Argentina +54 1 308 1610  
 Australia +61 2 9986 7400  
 Bahrain +973 252292  
 Belgium +32 (0) 2 481 04 57  
 Brazil +55 11 3889 4035  
 Canada +1 905 624 5010  
 China +86 10 6515 8828  
 Hong Kong +852 2313 0888  
 Czech Republic +420 236 032 552/511  
 Denmark +45 43 20 08 57  
 Egypt +20 2 23938151  
 Finland, Latvia, Lithuania, Estonia +358 (9) 521 52 53  
 France +33 (0) 1 55 93 66 67  
 Germany, Austria +49 (0)611 235 0  
 Greece +30 210 96 92 300  
 Hungary +36 (1) 382 60 60  
 India +91 120 247 1000  
 Indonesia +62 21 385 9449  
 Iran (Vida) +98 21 2271463  
 (Panasonic Office) +98 2188791102  
 Italy +39 02 6788 367  
 Jordan +962 6 5859801  
 Kazakhstan +7 727 298 0891  
 Korea +82 2 2106 6641  
 Kuwait +96 522431385

Lebanon +96 11665557  
 Malaysia +60 3 7809 7888  
 Mexico +52 55 5488 1000  
 Netherlands +31 73 64 02 577  
 New Zealand +64 9 272 0100  
 Norway +47 67 91 78 00  
 Pakistan +92 5370320 (SNT)  
 Palestine +972 2 2988750  
 Panama +507 229 2955  
 Peru +51 1 614 0000  
 Philippines +63 2 633 6163  
 Poland +48 (22) 338 1100  
 Portugal +351 21 425 77 04  
 Puerto Rico +1 787 750 4300  
 Romania +40 21 211 4855  
 Russia & CIS +7 495 6654205  
 Saudi Arabia +96 626444072  
 Singapore +65 6270 0110  
 Slovak Republic +421 (0) 2 52 92 14 23  
 Slovenia, Albania, Bulgaria, Serbia, Croatia, Bosnia, Macedonia, Montenegro +36 (1) 382 60 60  
 Spain +27 11 3131622  
 South Africa +34 (93) 425 93 00  
 Sweden +46 (8) 680 26 41  
 Switzerland +41 (0) 41 259 96 32  
 Syria +963 11 2318422/4

Taiwan +886 2 2227 6214  
 Thailand +66 2 731 8888  
 Turkey +90 216 578 3700  
 U.A.E. (for All Middle East) +971 4 8862142  
 Ukraine +380 44 4903437  
 U.K. +44(0)1344 70 69 13  
 U.S.A. +1 877 803 8492  
 Vietnam +848 38370280



JQA-0443



Factories of Systems Business Group have received ISO14001:2004-the Environmental Management System certification. (Except for 3rd party's peripherals.)