

APPLICATION NOTE

Capturing in 3D using STORM 3G & STORM 3G Elite

Alex Kataoka, *Product Planning*

January 2012

This application note details the steps required to capture 3D footage using the Grass Valley™ EDIUS® 3D Preview Version and either STORM™ 3G or STORM 3G Elite hardware.

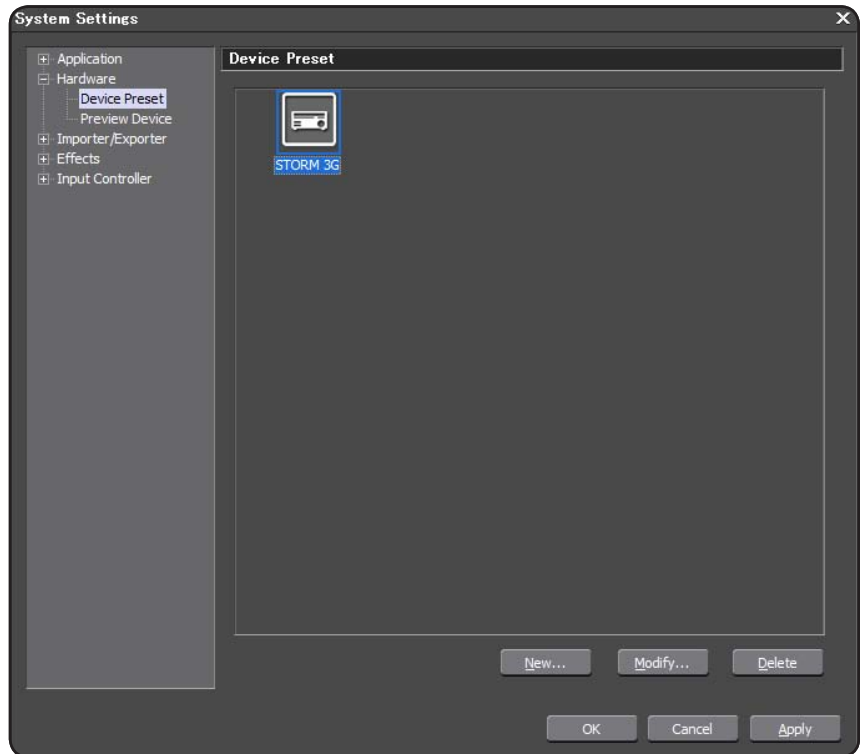
Please refer to the QuickStart Guide for further information about 3D editing when using the Grass Valley EDIUS 3D Preview Version.

Creating Device Presets

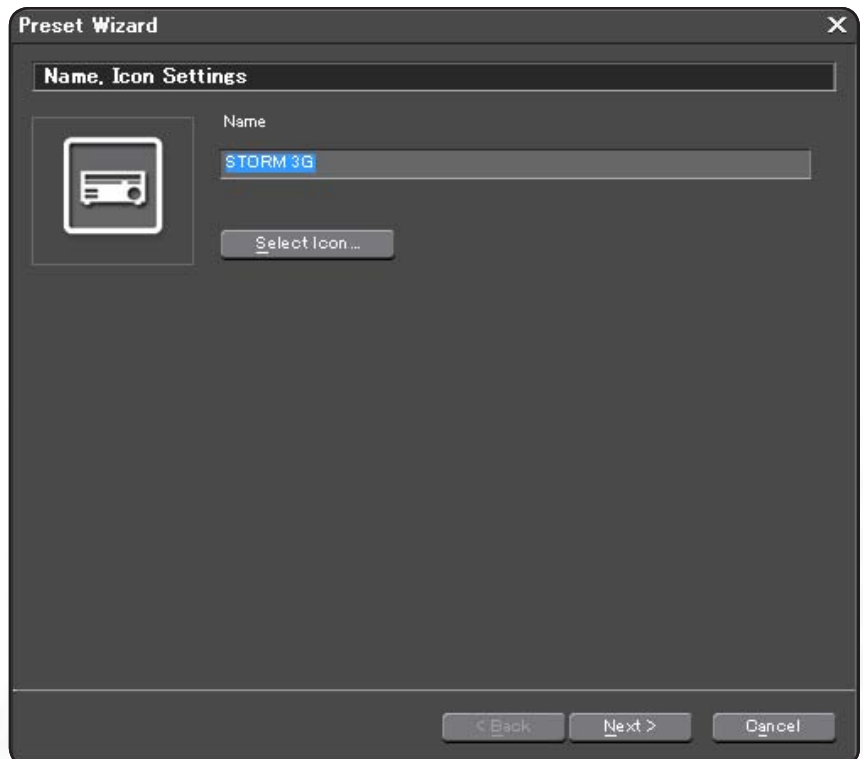
Start the EDIUS 3D Preview Version and go to [Settings] > [System Settings].

Click "Hardware" on the category tree and select "Device Preset."

Click [New] to start the preset wizard.



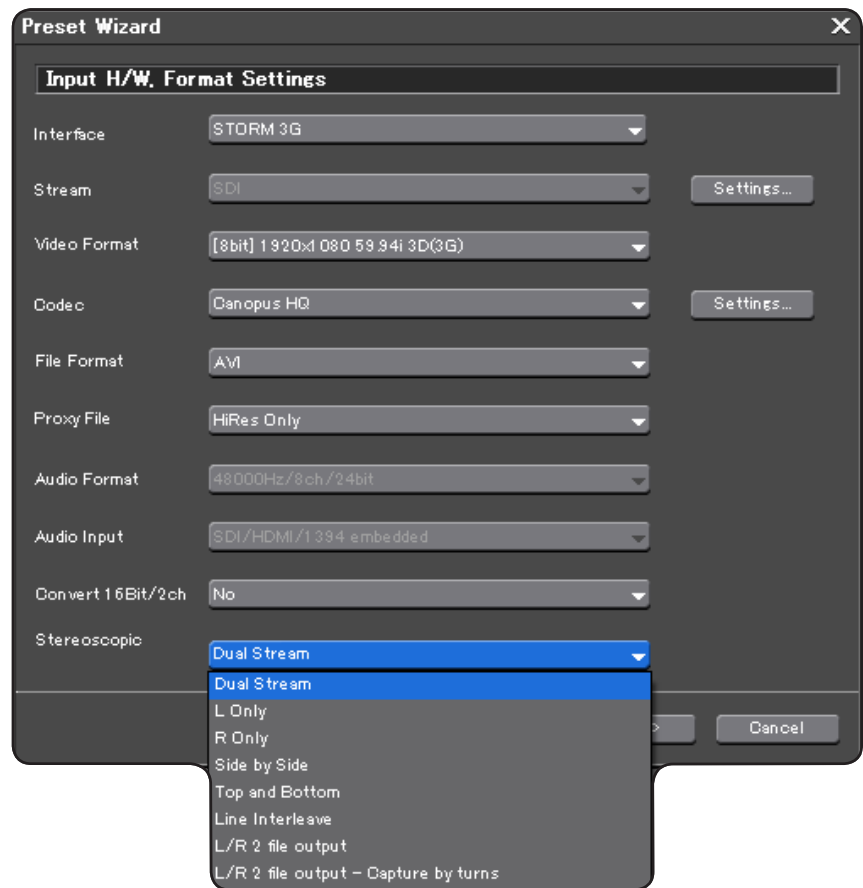
Enter a preset name and select a preset icon, and then click [Next].



Creating Device Presets (cont.)

Set [Interface] to [STORM 3G], set [Video Format] to select the capture format, and set [Stereoscopic] to select the 3D format.

Click [Next] after the setup.



STORM 3G Elite

Select "Stream," and set SDI A, SDI B, and SDI Dual Link according to the video equipment connected.

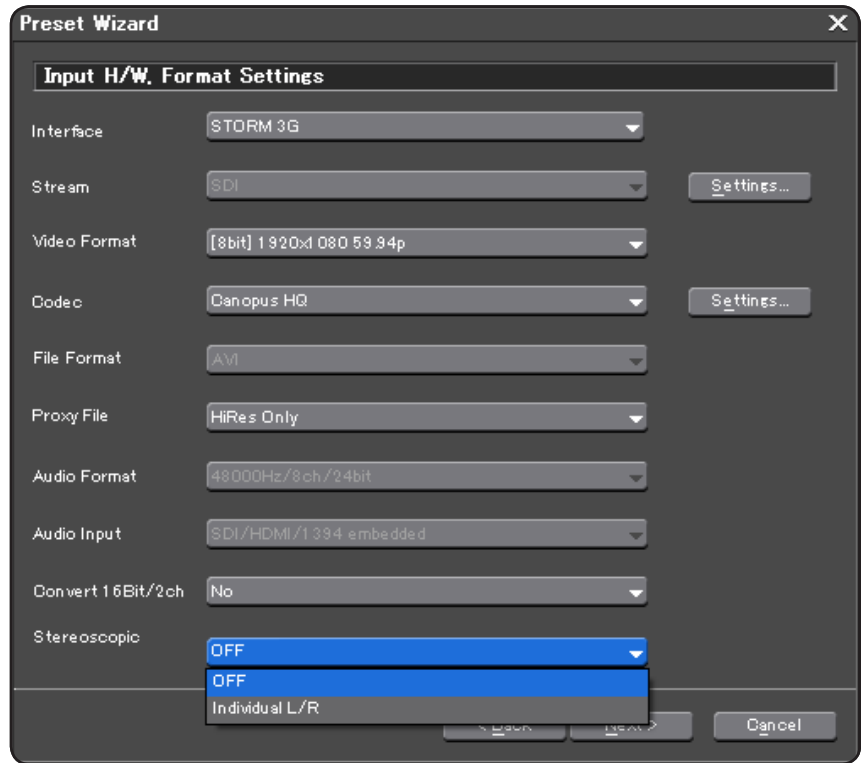
The following clips are created according to the [Stereoscopic] setting.

- When any of "L only," "R Only," "Side by Side," "Top and Bottom," and "Line Interleave" is selected the video stream of left and right is saved as single video stream to one file
- When "Dual Stream" is selected, two video streams, left and right, are saved as one file
- When "L/R 2 file output" and "L/R 2 file output-Capture by turns" are selected, two files (for left and right) are saved:
 - [L/R 2 file output] performs a capture of two files simultaneously
 - [L/R 2 file output-Capture by turns] is used when the system performance does not permit creating two files at the same time. It will capture from the same source, one file at a time

STORM 3G Elite (cont.)

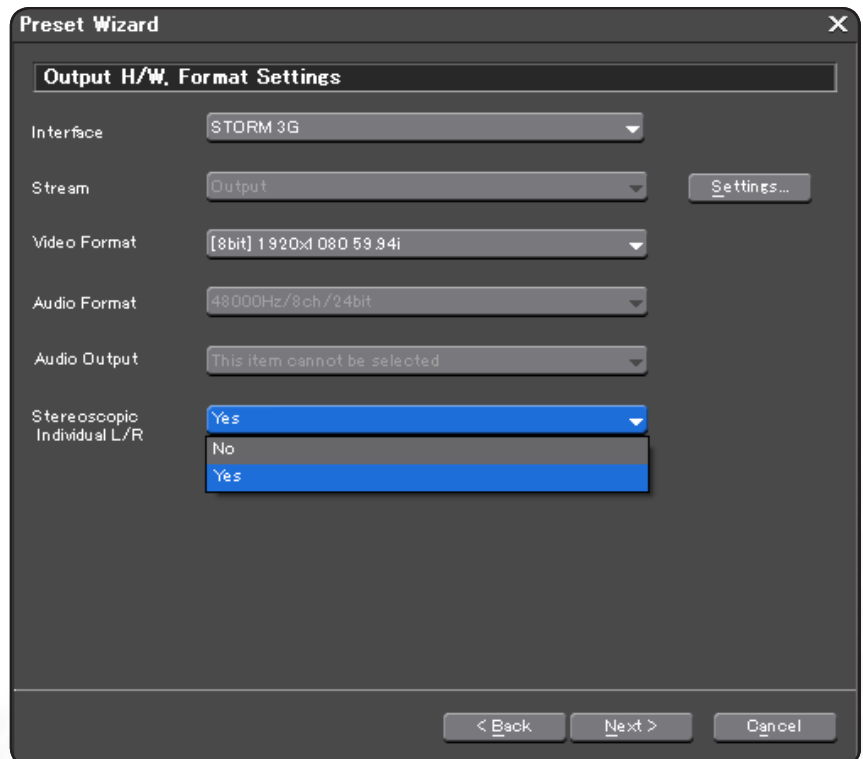
About Individual L/R Capture (batch capture)

If you have separate source tapes with left and right images, set the Video Format to settings that do not end with (3G), and set [Stereoscopic] to [Individual L/R].



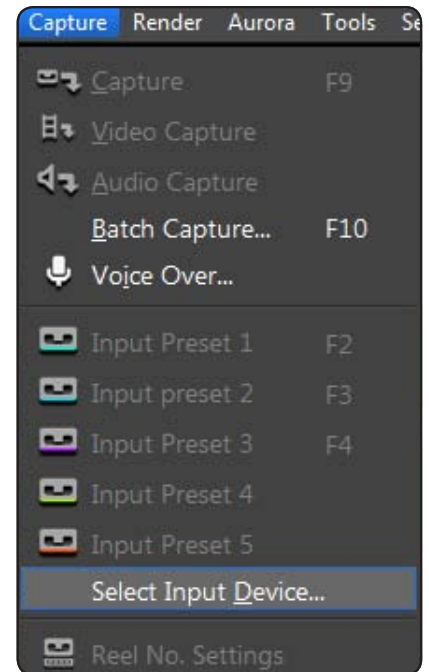
In output settings, set the output format settings.

Click [Next] and check the final settings.

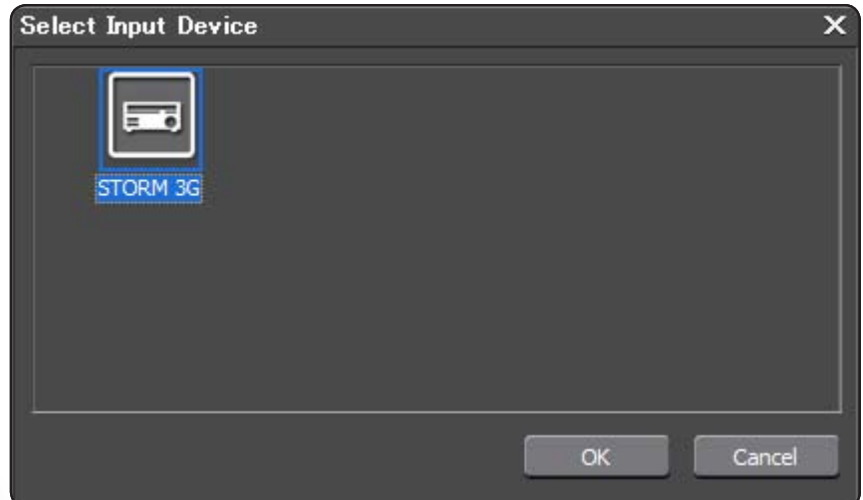


Capturing Footage

Select [Capture] > [Select Input Device].

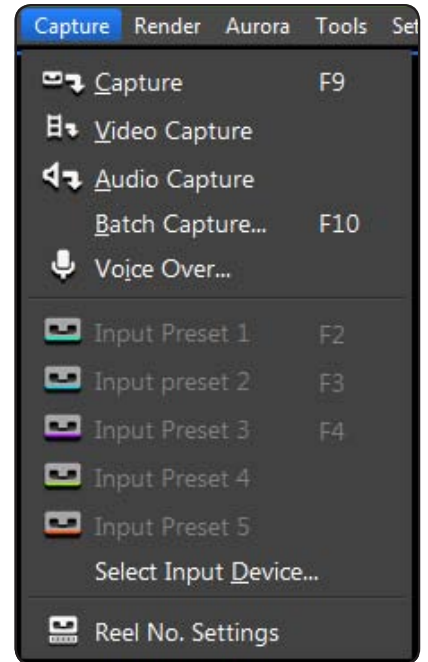


Select device preset and click [OK].

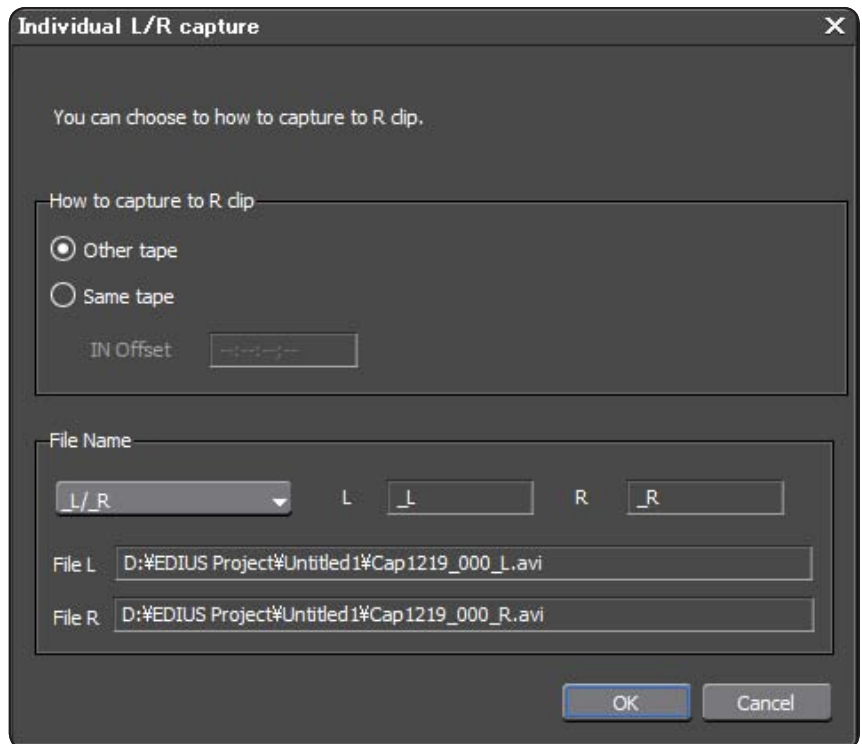


Capture

Go to [Capture] menu and select Capture mode.



Whenever you select [L/R 2 file output - Capture by turns] or [Individual L/R Capture] in Stereoscopic setting, a dialog box to set Individual L/R can be found in the Batch Capture menu.



GLOBAL SERVICES



Grass Valley Global Services specializes in the defining of, deployment of, and support of today's dynamic file-based workflows, based on Grass Valley and third-party solutions. With Grass Valley Global Services, you can achieve your operational goals in the most efficient and cost-effective way possible with a partner you can trust.

www.grassvalley.com/support

Define: We help you to define your business and technology requirements and then design solutions to meet them.

Deploy: Our professional service organization, backed up with proven project management methodologies, can take you from design through deployment, commissioning, and training.

Support: We offer a complete Support Agreement portfolio to keep your systems running and help plan for your long-term maintenance needs.

Join the Conversation at
GrassValleyLive on Facebook,
Twitter, and YouTube.

