

EDIUS

Professional Editing Software



canopus

www.canopus.com



EDIUS - Professional Editing Software

"EDIUS is Canopus's much-anticipated professional editing software platform. We have listened to our professional editing customers and studied their needs. We unified our video technologies to create a completely new engine that will meet our customer's needs today and in the future. EDIUS is built with our highest quality codec technology and integrates our scalable technology to deliver breakthrough realtime editing performance not available on any other system."

Hiro Yamada
Canopus founder and CEO.



EDIUS

The EDIUS Engine

Design specifications for EDIUS have ensured the highest standard in quality, speed, flexibility and most importantly, stability. The EDIUS engine is multithreaded, supports multiprocessors, Intel & AMD special CPU instructions (Hyper-Threading, MMX, SSE & SSE2, 3DNow!) and features full YUV color space processing. The engine operation is resolution independent and frame rate independent so future support of all video and audio formats is possible.

The EDIUS engine is engaged by an intuitive user interface to deliver robust powerful features including unlimited video, audio, title and graphic tracks, audio waveform display, voiceover recording to timeline, unlimited undo / redo, realtime filters, keying, PIP handling and 2D / 3D transitions. Extensive timeline editing capabilities include 3 point, 4 point, ripple, slip, slide editing as well as audio / video split editing.

The EDIUS engine is an editing platform for the future. EDIUS will evolve and scale to meet the editing and delivery challenges presented by tomorrow's new media formats.

EDIUS Key Features

User Interface

Floating window user interface for easy workspace customization.

(Customizable for single and dual monitor setup)

- > Dual or single preview windows *(recorder and player)*
- > Timecode & audio level overlay display
- > Timeline window
- > Bin window
- > Effect selector window
- > Drop down definable buttons
- > Information window
- > Marker window
- > Realtime waveform and vectorscope window
(available while capturing and previewing video)

Timeline Editing

Fast and flexible timeline editing for efficient workflow and increased productivity.

- > Unlimited video tracks
- > Unlimited graphic and title layers
- > Unlimited audio tracks
- > Audio waveform display
- > Transparency track keyframe
- > Audio level / Pan keyframe
- > Lock / Hide tracks
- > 3 point editing
- > 4 point editing *(fit to fill with realtime speed control)*
- > Ripple editing
- > Slip / Slide / Roll editing *(performed while viewing in / out points)*
- > Video / audio split editing
- > Interleave V/A track *(audio split edit)*
- > Voiceover recording support
- > Transition on same track *(all tracks)*
- > Transition between video tracks
- > ShuttleScrub preview window control
- > Unlimited undo / redo levels
- > Auto save feature

Effects

- > Simultaneous realtime effects for unlimited creativity
- > Realtime video and audio tracks
- > Realtime title and graphic tracks
- > Realtime filters
- > Realtime chroma & luma keying
- > Realtime 2D and 3D transitions
- > Realtime 3D perspective picture-in-picture
- > Realtime title effects

Titles

- > Insciber TitleExpress
- > Realtime roll / crawl
- > Realtime title motion

Video Clip Bin handling

- > Group select
- > Sorting functions
- File name
- Clip name
- File size
- Date

Video Input

- > Full DV deck control capture
- > Batch Capture
- > Seamless Capture / Capture to separate files at timecode break
- > Analog deck control capture with RS-422
(When using DVReX RT Professional)

Video Output

- > Realtime DV / Analog output from timeline
- > Timeline timecode output from DV *(When using DVStorm)*
- > MPEG 1,2 & 4 / Windows Media / RealVideo / Quicktime output from ProCoder LE - EDIUS Edition
- > EDIUS incorporates Canopus's proprietary MPEG codec technology

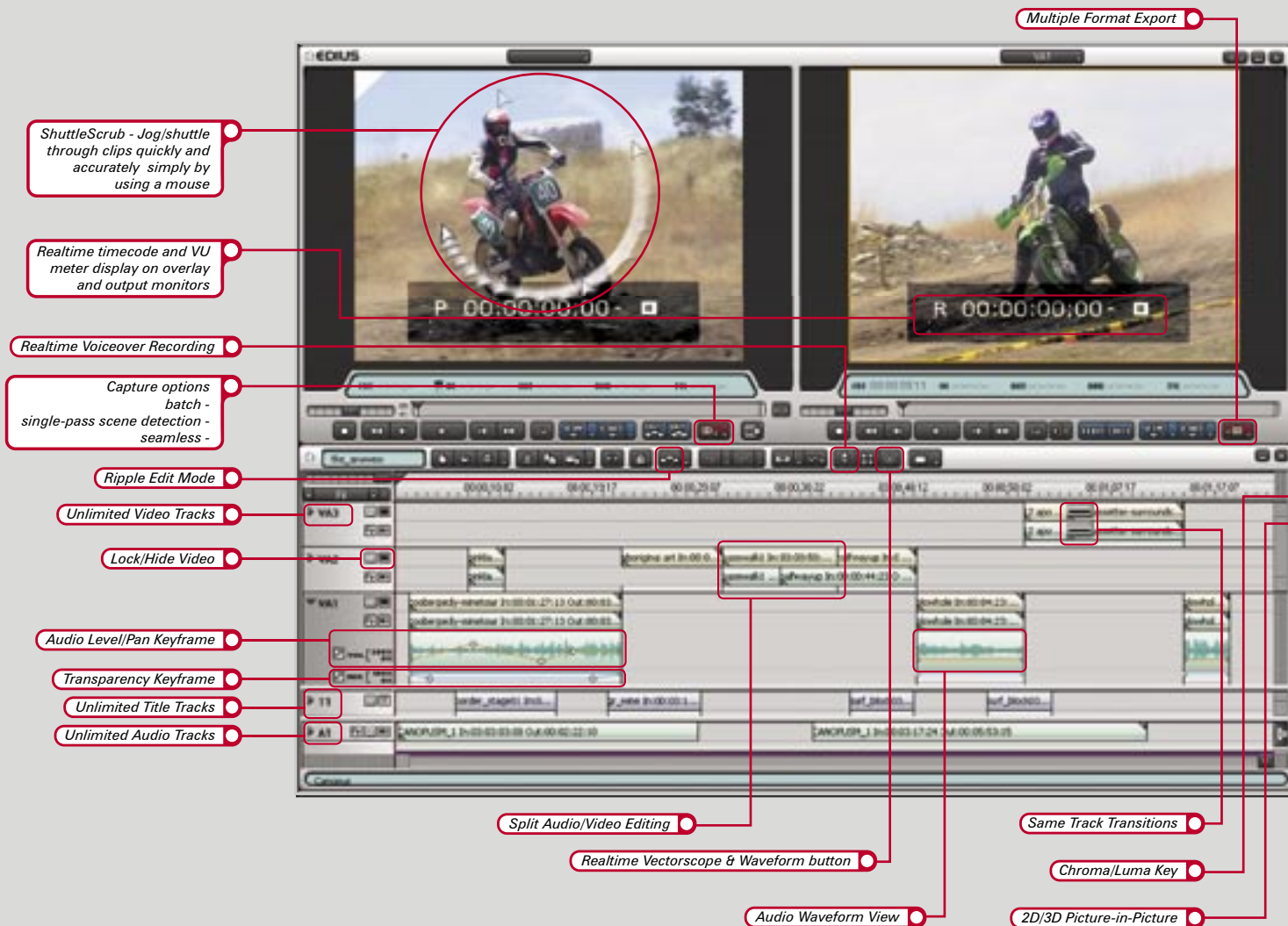
Hardware Support

- > DVStorm series
- > DVReX RT
- > DVReX RT Professional

The EDIUS User Interface

EDIUS breaks new ground in editing productivity and workflow with a fast intuitive user interface.

The dynamic new interface is the result of carefully listening to editors. Every interface detail and edit procedure has been extensively researched for the best implementation. The EDIUS interface provides editors with instant responsiveness when maneuvering through the most complex timeline projects and while handling dozens of clips.





> Quickly and accurately adjust edit points with the Slip Edit preview mode



> Customize button functions with the drop-down definable buttons feature

Individual Effect Control

Stackable Realtime Filters

Adjustable Poster Frames

Add Clip to Timeline

Bin View Sorting

27 Realtime Filters

26 Realtime Transitions

7 Audio Filters

Quick timeline navigation

Realtime Vectorscope & Waveform

> Edius features unlimited video, audio and title tracks

> Record additional audio directly to the timeline (requires soundcard)

EDIUS Effects Technology

EDIUS integrates Canopus's effects technology to provide editors with a new level of artistic video tools and creativity. EDIUS's stackable realtime video filters provide limitless combinations of complex effects and composites quickly while maintaining render free realtime output.

Realtime Video Effects

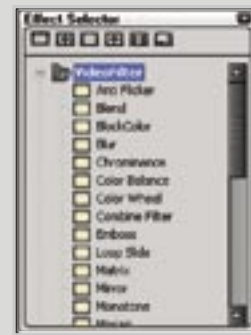
The Effect Selector window contains 27 realtime video filters including White/Black Balance, Color Balance, High Quality Blur and Region. In addition, there are realtime YUV keying effects for use in compositing, namely Chroma Key and Luma Key. EDIUS also features a fully customizable 2D/3D Picture-in-Picture effect. All effects in EDIUS are easily adjustable and may be combined to produce a desired result.



> *White Balance*



> *Chroma Key*



> *Effects Selector*

Xplode for EDIUS and EDIUS FX Realtime 2D and 3D Transitions

Featured in EDIUS are Xplode for EDIUS and EDIUS FX, advanced 2D and 3D video effect engines. These transition effects packages feature proprietary Canopus Effects Technology and provide the power to create stunning and professional quality video transitions. With over 40 transition groups to choose from, each with customizable options for control and numerous presets, Xplode for EDIUS and EDIUS FX provide sophisticated power for the demanding video editor.



> *Cube Spin*



> *Cube Spin Configuration*

The EDIUS engine also supports plugins, which can allow additional effects packages such as Xplode Professional 4.0 to be incorporated seamlessly into the editing software.

Realtime Titling and Inscriber TitleExpress

EDIUS is capable of unlimited simultaneous realtime title and graphic layers. Motion and opacity controls allow each layer to behave differently. Title Motion Filter effects within EDIUS include Blur, Dissolve, Slide, Wipe and Laser.

Inscriber TitleExpress, shipped with EDIUS, allows users to quickly and easily create polished, high-quality video titles. Editors can choose from over 170 pre-designed titling templates, then simply type in their text. In addition to templates, users have the freedom to generate their own titles.

Video editors can craft their look through text placement, sizing, kerning, width, leading and slant. For added flexibility, TitleExpress can import a background image and produce credit rolls and crawls, which EDIUS can output in realtime.

TitleExpress is a television-quality character generator that uses Inscriber's award-winning technology employed by broadcasters around the world.



> **Inscriber TitleExpress** - Create static, rolling or crawling titles from preset or custom artwork

MPEG & Export Formats

The quality of output of a completed video project is just as important as the editing process itself and EDIUS addresses this by providing fast, high quality, multiple format exporting facilities out of the box. Using technology featured in Canopus's highly acclaimed multi-format conversion software package ProCoder, EDIUS allows users to export to MPEG-1, MPEG-2, QuickTime and RealMedia formats, in addition to Canopus's own proprietary DV AVI format.



> **ProCoder LE - EDIUS Edition MPEG2 Settings**



> **ProCoder LE - EDIUS Edition Wizard**



Specifications

Package Contents

- > EDIUS software CD-ROM
- > EDIUS manual
- > EDIUS tutorial DVD

Minimum System Requirements

- > Intel® Pentium® III or AMD Athlon™ 1GHz CPU or higher.
- > 256 MB RAM; CD-ROM drive
- > 100MB free disk space
- > Windows® XP Home or Windows® XP Professional
- > VGA graphics card capable of 24 or 32bit color at 1024x768 resolution
- > Dedicated AV-Rated video storage (10MB/sec minimum sustained transfer)
- > Soundcard for voiceover recording (optional)
- > Canopus DVStorm/DVStormSE, DVStorm2, DVReX RT or DVReX Professional

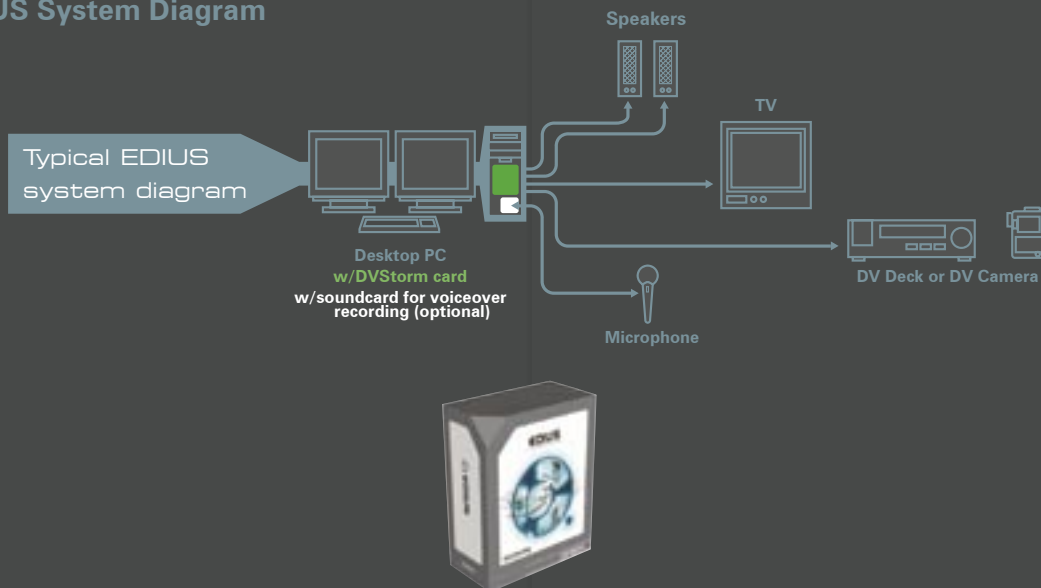
Recommended Systems Requirements

- > AMD Athlon 2GHz, Intel Pentium 4 2GHz or faster (Multiple CPUs supported)
- > 512MB RAM

Service and Support

- > 90 day limited warranty

EDIUS System Diagram



© 2003 Canopus Co., Ltd. All rights reserved. The Canopus logo and EDIUS are trademarks of Canopus Corporation. All other trademarks are properties of their respective holders. All specifications are subject to change without notice.

canopus