

Digital Support Accessories



CONFIGURATION OVERVIEW – 6.4.0 / 2010.07

© 2010 Arnold & Richter Cine Technik GmbH & Co. Betriebs KG. All rights reserved. This material is provided "as is" for information purposes only without any warranty. ARRI assumes no responsibility with regard to the performance or use of the products or typographical errors or inaccuracies of given information. Product specifications are subject to change without notice. For a full listing of all available components consult the price list.

Quick Release HD Baseplate QR-HD1

Quick Release HD Baseplate QR-HD1

- Quick switch from tripod to hand held for video cameras
- Compatible with ARRI studio rod system
- Unique centering adjustment allows perfect fit with many video cameras

Quick Release HD Baseplate Set 19 mm,

- including complement of rods. Set includes:
- Quick Release HD Baseplate QR-HD1
 - Bridge Plate Sled with Bottom Dovetail Plate
 - 19 mm Support Rod Holder
 - 240, 340 and 440 mm Rods (19 mm)
- K0.60053.0

Quick Release HD Baseplate Set 19 mm,

- Set includes:
- Quick Release HD Baseplate QR-HD1
 - Bridge Plate Sled with Bottom Dovetail Plate
 - 19 mm Support Rod Holder
- Support Rods must be ordered separately!**
- K0.60050.0

Quick Release HD Baseplate Set 15 mm,

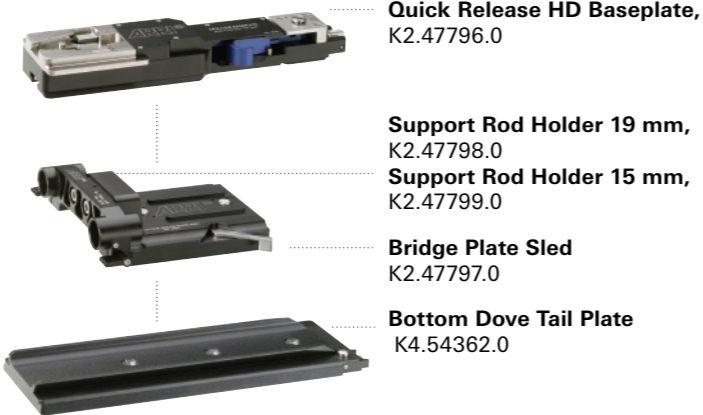
- including complement of rods. Set includes:
- Quick Release HD Baseplate QR-HD1
 - Bridge Plate Sled with Bottom Dovetail Plate
 - 15 mm Support Rod Holder
 - 240, 340 and 440 mm Rods (15 mm)
- K0.60054.0

Quick Release HD Baseplate Set 15 mm,

- Set includes:
- Quick Release HD Baseplate QR-HD1
 - Bridge Plate Sled with Bottom Dovetail Plate
 - 15 mm Support Rod Holder
- Support Rods must be ordered separately!**
- K0.60051.0

Quick Release HD Baseplate Set

- All sets include:
- Quick Release HD Baseplate QR-HD1
 - Bridge Plate Sled
 - Bottom Dovetail Plate
 - Support Rod Holder (size see set specification)
 - Rods (size see set specification)



Quick Release HD Baseplate, K2.47796.0

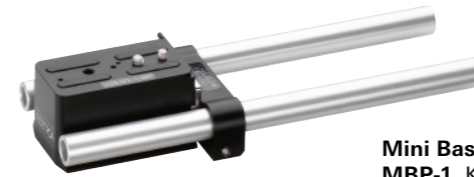
Support Rod Holder 19 mm, K2.47798.0

Support Rod Holder 15 mm, K2.47799.0

Bridge Plate Sled K2.47797.0

Bottom Dove Tail Plate K4.54362.0

Mini Baseplate MBP-1



Mini Baseplate 1 MBP-1, K2.66051.0

DSLR Riser, K2.65225.0

Mini Baseplate MBP-2



- Back Adapter MBP-2,
 Sony HVR-Z5 K2.65202.0
 Panasonic AG-HPX171 K2.65174.0
 Sony HDR-FX1 K2.65171.0
 Sony HVR-Z1 K2.65171.0
 Sony HVR-Z7 K2.65171.0
 Sony PMW-EX1 K2.65171.0
 Sony PMW-EX3 K2.65173.0

- Sony HVR-V1 K2.65172.0
 Canon XL-H1 K2.65169.0
 JVC GY-HD-100 K2.65175.0
 Panasonic AG-HVX200 K2.65170.0

DSLR Riser (only in combination with EX-3 adapterplate) K2.65225.0

19 mm Studio Rods

- 540 mm, K2.72028.0
- 440 mm, K5.42904.0
- 340 mm, K4.47347.0
- 240 mm, K2.43046.0
- Lightweight rod set 240 mm K4.52695.0
- Lightweight rod set 185 mm K2.55024.0
- Lightweight rod set 165 mm K2.55023.0

15 mm Studio Rods

- 540 mm, K2.72029.0
- 440 mm, K5.21957.0
- 340 mm, K4.47348.0
- 240 mm, K2.21958.0

- 15 mm Support rods with threads for LWS-3 (pairs)
 5 mm, K2.47111.0 27 mm, K2.47112.0
 113 mm, K2.47114.0 126 mm, K2.47113.0

Lens Support

- Lens Support LS-9 for 19 mm rods K2.47227.0
- Lens Support LS-10 for 15 mm rods K2.47228.0

Adapter Plates for 19 mm and 15 mm Studio Rods and Studio Accessories



Wedge Adapter, WA-1 (needed for use with ALEXA) K2.72002.0



Quick Release HD Baseplate QR-HD1

Tripod

Most flexible connection of camera to tripod

Adapter Plate for Lightweight Support System



Rosette left, (for ULB-3) K2.47639.0



Universal Lightweight Support ULB-3, K2.47650.0

Handgrip Extension K2.47648.0



Digital Camera Hand Grip Adapter Cable K2.47649.0



Camera Handgrip Right K2.45886.0

Extension tube for handgrip K2.47136.0