



High Performance, Scalable Shared Storage for Collaborative Post, Broadcast, DI, and more

EditShare began its history as an industry leader in media-optimized storage, and today, central storage is still at the heart of everything we do. Whether you're running a small, independent production shop, a large operation with a hundred or more editors – or even a high-end finishing facility focused on 2K and Digital Intermediate work – EditShare has a storage product that will meet your needs and fit within your budget.

EditShare customers include feature film producers and production companies of all sizes as well as national television networks and newsrooms. What features attract them all to EditShare? Unique Project Sharing for Avid, Final Cut Pro, Premiere Pro, Lightworks, and other NLE applications, outstanding performance and stream counts with tremendous scalability, standard 1 and 10 Gigabit Ethernet connectivity, rock-solid Linux-based reliability with RAID-6 and RAID-5 redundancy, and powerful but simple administration and management features are a few reasons.

EditShare storage solutions come in a wide range of models to suit your needs from the Field 2 and Energy Series to the high-performance XStream Series.

Feature Highlights

EXTREME PERFORMANCE

XStream shared storage systems deliver industry-leading stream counts supporting hundreds of simultaneous users as well as DI and other high-bandwidth workflows.

EXTREME SCALABILITY

XStream's design allows you to expand "up" via Expansion Chassis and "out" via additional Workflow Directors:

Expand Up: With PCI-e expansion, you can attach up to four 16-drive Expansion Chassis to an individual Workflow Director – giving you up to 320TB in a single XStream server.

Expand Out: With EditShare's Extreme Scalable Architecture (ESA), expanding into the petabytes is no more complicated than adding additional Workflow Directors to the network.

EDITSHARE PROJECT SHARING

Project Sharing lets editors draw on the same central pool of media and work in the same project simultaneously - freely and safely sharing raw material, bins, and sequences.

POWERFUL, EASY CONNECTIVITY

Media-optimized Gigabit Ethernet and 10 Gigabit Ethernet connections combine large stream counts with simplicity and cost-effectiveness.

NO PER-SEAT LICENSE

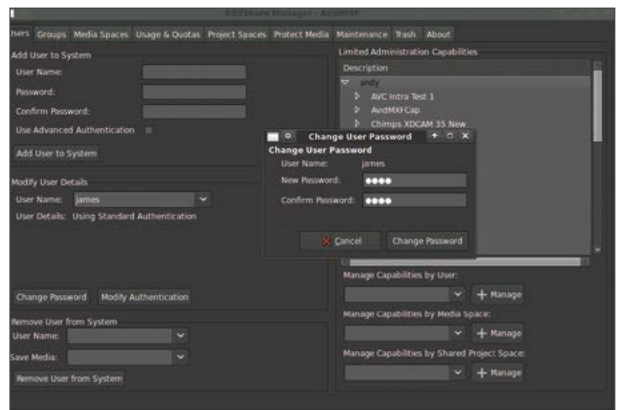
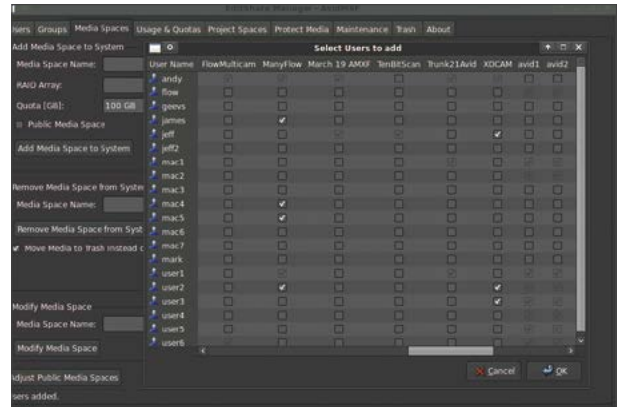
Removes barriers to productivity and provides faster return on investment.

DELETION SECURITY

Controls who can delete files and when. Also, EditShare uniquely includes "Delete to Trash" and "Undo" functions.

XSTREAM ADMINISTRATION FEATURES

- ▶ Intuitive User Management tool for creating unlimited editor/user accounts
- ▶ Ability to grant ‘limited administration’ privileges to editors for common management tasks
- ▶ Storage Usage tool provides clear overview of space utilization
- ▶ Active Directory support for unified logins
- ▶ CSV file import for easy creation of large numbers of users and media spaces
- ▶ Clean Sweep tool allows quick but controlled deletion by project, user, or media type
- ▶ Remote Support tool allows activation of live remote desktop for support by EditShare technicians
- ▶ Notification when space quota levels are being approached
- ▶ Watch folder file notification service for broadcast playout servers
- ▶ Daily Health Report indicators of system status - hard drive health, UPS health, space utilization, and more
- ▶ Remote administration from any Windows, Mac or Linux client
- ▶ All alerts and information can be emailed automatically to system administration team.



CLIENT SUPPORT

- ▶ EditShare Connect Tool: Mounts users’ authorized media and project shares and manages administration tools
- ▶ EditShare Project Browser: for managing shared projects (metadata) for tight collaboration
- ▶ Real-time project sharing: Avid, Apple Final Cut Pro 7, Adobe Premiere Pro, and Lightworks - project sharing with sequence and bin locking
- ▶ Real-time collaboration: Avid Media Composer®, Avid DS, Final Cut Pro, Lightworks, Adobe® Premiere Pro®, Adobe After Effects®, EDIUS, Smoke, Resolve, Digital Vision, Pro Tools, and more on standard EditShare media spaces
- ▶ Mac OS X 10.5-10.8, Windows 8/7/XP, and Linux client platform support
- ▶ Supports SMB, AFP client network protocols; NFS also available
- ▶ No per-seat client licenses
- ▶ File-level locking/protection for perfect video workflow and sharing
- ▶ Support for direct capture and play from EditShare media spaces in Pro Tools V10 or higher
- ▶ Optional iSCSI support for other software applications and versions that require direct-attached storage

- ▶ System can be managed from any workstation on the EditShare network
- ▶ Server can support unlimited number of clients (subject to bandwidth limitations of network and HDD).

EXPANDABILITY

- ▶ Both capacity and bandwidth of a single Workflow Director can be increased with PCI-e expansion, the fastest storage expansion technology available
- ▶ Up to 4 XStream Expansion Chassis can be connected to one Workflow Director, for a total of 80 drives in one system
- ▶ Additional Workflow Director servers can also be added and easily administered together using EditShare’s Extreme Scalable Architecture (ESA)
- ▶ Virtually unlimited storage size and number of simultaneous users is therefore possible.

NETWORKING

- ▶ Gigabit Ethernet (1 GigE) and 10 Gigabit Ethernet (10 GigE) Support
- ▶ Dual port 1 GigE and dual port 10 GigE (10GBaseT or CX4 copper) included standard
- ▶ Bonded connections to switch, connect to one or multiple switches, or direct connect to workstations in selected switchless configurations
- ▶ Optional single or dual port 10 GigE network interfaces also available in SFP+ Fibre (SR/LR/ER/Direct Attach Cable) or 10GBase-T.

FILE AND OPERATING SYSTEMS

- ▶ Linux Mandriva 64-bit Server OS
- ▶ XFS Real-time high performance file system (on media RAID).

PERFORMANCE

- ▶ 7200rpm SATA or SAS drives over 1400 MB/sec raw single stream sequential read/write performance per 16-drive chassis. Multi-stream performance up to 700 MB/sec per 16-drive chassis.
- ▶ 15000rpm SAS drives over 2700 MB/sec raw single stream sequential read/write performance per 16-drive chassis. Multi-stream performance up to 1200 MB/sec per 16-drive chassis.
- ▶ Supports resolutions up to 2K DPX, multi-cam compressed HD, and support for all other NLE resolutions.





XSTREAM 3U
Workflow Director and four Expansion Chassis

XStream Product Specifications

SERVER MODELS

Workflow Director	Rack mountable 3U Server with 16 HDD
Expansion Chassis	PCI-e connected rack mountable 3U Expansion with 16 HDD. Up to 4 Expansion Chassis can be connected to one Workflow Director.

SERVER HARDWARE

- ▶ Intel Six Core Xeon CPU, Intel motherboard chipset
- ▶ 24GB DRR3-1600 ECC high speed RAM
- ▶ Sixteen 3.5" enterprise-class 7200rpm SATA or SAS 6Gb/s media drives in 1TB, 2TB, and 4TB capacities
- ▶ Optional 15000rpm SAS 6Gb/s media drives in 300GB and 600GB capacities
- ▶ Mirrored 2.5" 320GB SATA 3Gb/s OS drives, rear accessible
- ▶ 6Gb/s Hardware RAID Controller with 16 SATA/SAS ports (dedicated RAID controller for each 16 drive set)
- ▶ RAID 6 standard, configurable to other RAID standards such as RAID 5, 50, or 60
- ▶ Automatic and manual background rebuilding of drives after failure
- ▶ E-mail notification of disk errors, alarms, and daily status report
- ▶ Rebuild and verification priority settings.

All specifications are subject to change at any time without notification.

ELECTRICAL

Dual universal input	100-260VAC, 50/60Hz
Max power consumption	Workflow Director: 450W, Expansion Chassis: 250W
Power supply	Hot swap redundant high-efficiency (1+1 module)
Compliance	RoHAS compliant, cNRTLus (cTUVus), CE Mark, FCC Part 15, etc.

ENVIRONMENTAL

Temperature	0°C (32°F) ~ 50°C (122°F)
Humidity	5% ~ 95% non-condensing
Typical Thermal Output	Workflow Director: 1200-1500 BTU/hr, Expansion Chassis: 750-850 BTU/h Internal redundant hot-swappable fans

DIMENSIONS

(Width x Height x Depth) (All rack-mountable and supplied with rack rails)

Workflow Director (3RU)	19x5.25x27.5" / 483x134x699 mm
Expansion (3RU)	119x5.25x23.5" / 483x134x597 mm

MAX SHIPPING WEIGHT

Workflow Director	120 lbs/55 kilos
Expansion	75 lbs/34 kilos