

K2/Avid Transfer Manager

PLUG-IN APPLICATION

With the K2/Avid Transfer Manager plug-in, you can easily push and pull files stored on a K2 server to and from an Avid editor or shared-storage device. K2/Avid Transfer Manager now supports drag and drop directly from STRATUS to the Media Composer timeline.



The Grass Valley™ K2 media server/ media client system and STRATUS™ Media Workflow Application Framework are ideal for broadcast and production environments, offering support for a wide range of applications to address specific workflow needs in the most cost-efficient and cost-effective ways possible.

An Open Systems Approach

Fundamental to the design of the K2 system is its ability to interface to a variety of third-party news and production applications.

One of these applications is the K2/Avid Transfer Manager plug-in, which provides a seamless interface between STRATUS and K2 servers and Avid standalone and shared-storage environments.

Seamless Integration into Avid Workgroups

With the K2/Avid Transfer Manager plug-in, you can easily push and pull files stored on a K2 server to and from an Avid editor or shared-storage device. Now it is even easier with the support of Grass Valley's media management system STRATUS, where you can browse K2

clips and simply drag and drop the asset to the timeline. That's because the K2 system stores all content as elementary files—the most efficient way to store video and audio on a server. That means you're not limited to AVI or MXF wrapped files.

The K2 system enhances the Avid Workgroup solution, including the Avid Interplay nonlinear workflow engine, by providing a fast and reliable server for ingest and playout.

For example, pairing the K2 system with the STRATUS ingest tools—or other available third-party applications—you can easily ingest multiple feeds from 24-hour news channels, journalists working in the field, tape, or archive, into a shared storage area network (SAN). All editors can immediately pull the materials they need directly from inside their Avid editors—even while it is still being ingested.

On the playout side, once you create a story or a promo with an Avid editor, you can send it to a K2 server for immediate playout. You can control the playout via our Aurora Playout system

coordinated playback solution, a third-party automation system, a newsroom computer system (NRCS), or manually with the K2 AppCenter software. Using the K2/Avid Transfer Manager plug-in, you can even begin playout while the file is being streamed from your editor to a server.

The plug-in transfers files over gigabit Ethernet networks for the K2 system. It can either transfer the files or stream them. Streaming enables you to start editing a file while it is still being ingested by the editor or play it to air while sending it back to the server.

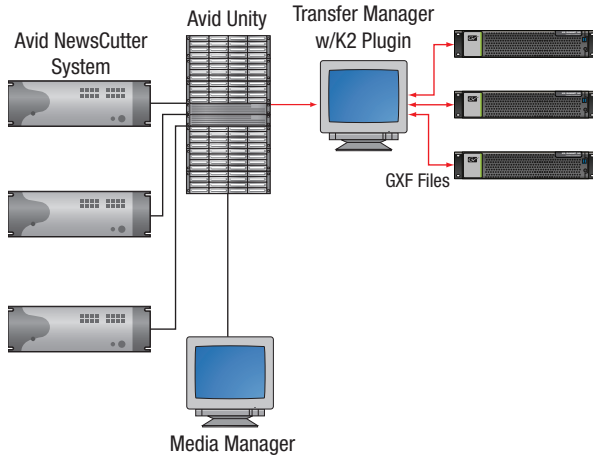
High-Speed Features

Speed is generally a major issue for news or production workflows. The K2/Avid Transfer Manager plug-in includes a number of special features to accelerate your workflow. They include a streaming capability that lets you access a file while it's being transferred, a mirroring option that lets you save to two servers (main and backup) in one operation, and the ability to simultaneously transfer up to four files between the K2 and editing environments.

KEY FEATURES

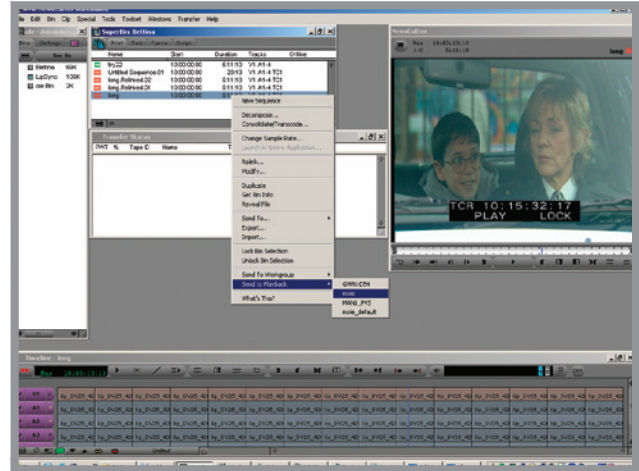
- Supports K2 and K2 Summit™ servers
- Broad Avid solutions support:
 - Avid NewsCutter XP
 - Avid NewsCutter Adrenaline
 - Avid Unity
 - Avid Interplay
- Push/pull files from inside the editor
- High-speed features:
 - Mirroring
 - Streaming
 - Up to four simultaneous transfers

Seamless Integration



The K2/Avid Transfer Manager plug-in lets Avid users view, push, and pull clips between editors and K2 servers. For SAN configurations, the Transfer Manager application is a workstation, for standalone systems it is built in.

Transferring Files



From inside an Avid editor, you can send a file directly to the K2 system. The transfer window displays the status and a variety of send-to options. From inside the editor, you can see the K2 directory and pull the files into your application.

SPECIFICATIONS

Supported Servers

Supports the following servers in standalone and shared storage (SAN) configurations:

- K2 Summit and Solo V7.1 or later
- K2-SD-04, K2-HD-xx (SD mode only) V3.1.12 or later

Compression Formats

- SD formats:
 - DVCAM
 - DVCPR025
 - DVCPR050
 - D10 (IMX 30/40/50)
- HD formats:
 - AVC-Intra 50
 - AVC-Intra 100
 - XDCAMHD 422 50
 - XDCAM EX 35
 - XDCAM EX 50
 - DVCPRO HD

Audio

- 16-bit/24-bit audio support
- Up to 16 tracks of audio/video

Transfers

- Four simultaneous file transfers or one streaming transfer
- Playout while transfer
- Transfer while record
- File overwrite
- Multiple target directories support
- Field count support
- Automatic transfers to main and backup servers
- Frame chase editing support on Avid SAN

Avid Environment

- Avid interplay Transfer engine standalone or server version 2.2.1.4 or later
- Windows only
- Avid Media Composer version 5.0 or later
- Avid News Cutter version 9.0 or later

ORDERING INFORMATION

Products require a software license, which is installed on the K2 system, and do not require a dongle on the Avid product.

K2-Avid™-Client

K2 connection kit for Avid standalone editors

K2-Avid™-SAN

K2 connection kit for Avid Shared Storage systems with Avid TransferManager Server

Free Trial

A fully functional version is available for a 30-day free trial at <http://www.grassvalley.com/products/servers/k2>. After 30 days, it will be disabled until a purchased license is obtained.

www.grassvalley.com/sales

MAXIMIZE AND OPTIMIZE YOUR INVESTMENT



With program production and distribution becoming ever more complex and affecting business issues on a daily basis, you need a trusted partner that understands those complexities and how to convert them into opportunities. Grass Valley Global Services' team of experienced engineers and system integrators can help you turn your challenges into opportunities in the most efficient and cost-effective way possible, from system design all the way through to commissioning. Global Services helps you to:

Define: We consult with you to help define your business and technology requirements and then design the right solutions to meet them.

Deploy: Our professional service organization, backed by proven project management methodologies, can take you from design through deployment, commissioning, and training.

Support: We offer a complete portfolio of support services to keep your systems running, and help manage your long-term maintenance needs.

For information about Grass Valley, please visit www.grassvalley.com.

Join the Conversation at
GrassValleyLive on Facebook,
Twitter, and YouTube.

