

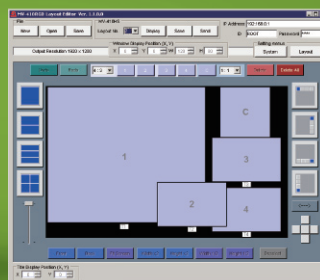
## PC/Video High Resolution Quad Viewer

# MV-410RGB

**4 split-screen system supporting mixed input of DVI (digital and analog RGB) and analog composite signals. High-resolution video output using a DVI terminal is included as standard. Supports user-created patterns.**



- Support for mixed input of DVI (digital and analog RGB) (used for computer monitor output) and analog composite signals (the commonly used video signal) (asynchronous input is possible)
- Provides a total of eight channels of input: four digital/analog RGB signal channels with the DVI-I connector, and four analog composite channels  
 \*Number of channels capable of simultaneous display: four channels
- RGB output with DVI-I connector is provided as standard for enabling easy usage on large screens and computer monitors
- High-resolution output: Maximum output resolution is WUXGA (1920×1200 pixels). Even with split screen, each channel's video can be monitored at high resolution.
- Layout editor comes standard: The user can freely make changes to the split-screen layout pattern from a computer
- A title can be displayed for each channel (alphanumeric characters, Japanese kanji, Japanese kana, symbols)
- An analog and digital clock can be displayed for the time display function



Layout editor

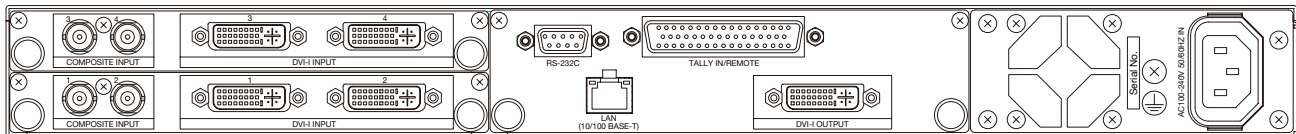


Free layout image

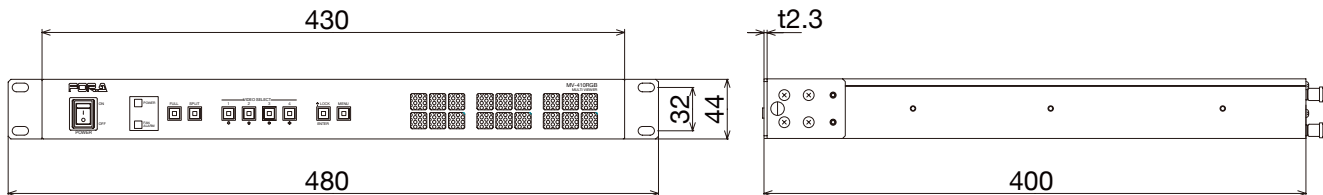
## Specifications

● Video Input	Analog composite: 1.0 Vp-p, 75Ω, 4 inputs, BNC
Video	NTSC, PAL (mixed input and asynchronous input are possible)
PC	DVI-I connector (analog or digital), 4 inputs
	- Resolution (analog): 1280 x 1024, 1360 x 768, 1024 x 768, 640 x 480 / Frequency: 60Hz
	- Resolution (digital): 1920 x 1200, 1600 x 1200, 1280 x 1024, 1360 x 768, 1024 x 768, 640 x 480 / Frequency: 60Hz
Video Input	- Four channels are available for simultaneously displayable input (choose from a menu for each channel).
	- DVI-I connectors support both analog and digital input. Each connector can be connected for either one type of input.
	- No frame rate conversion function between input videos and input/output videos.
	*If video is displayed with different frame rates, dropped frames, etc. may occur periodically.
● Video Output	DVI-I connector (analog and digital), 1 output
	Resolution: 1920 x 1200, 1920 x 1080, 1680 x 1050, 1600 x 1200, 1440 x 900, 1360 x 768, 1280 x 1024, 1280 x 720
	Frequency: 60Hz/ 59.94Hz/ 50Hz
● Quantization	8-bit
● I/O Delay	1 to 3 frames
● Split-screen Patterns	Full screen, user-selected screen (4-pattern touch button recall memory)
● Character Display	Display characters: Maximum of 16 characters x 1 line per input channel Character types: Alphanumeric, symbols (two-byte characters)
● Tally Display	Tally indication appears as border (red or green) around each channel screen
● Time Display	Analog clock display (accuracy within ±10 sec per month.)
● Interfaces	RS-232C: 1 port, 9-pin D-sub (male) - Baud rate 9600bps, Data length 8 bit, Stopbit 1 bit, No parity - Control: Video output selection TALLY IN: 1 port, 50-pin D-sub (female) *Shared with REMOTE IN - 4 inputs x 2 colors (red or green color frame display) TTL negative logic level signal or make-contact input REMOTE IN: 1 port, 50-pin D-sub (female) *Shared with TALLY IN - Control: Switching between full screen and split-screen display TTL negative logic level signal or make-contact input LAN: 10Base-T/100Base-TX, 1 port, RJ-45 (CAT5 support) - Control: Video output selection
● Layout Editor	Setting of the split-screen video size and video position, and menus
● Temperature / Humidity	0°C - 40°C / 30% - 90% (no condensation)
● Power / Consumption	100VAC - 240VAC ±10%, 50Hz/60Hz / 52VA (51W)
● Dimensions / Weight	430 (W) x 44 (H) x 400 (D) mm EIA 1RU/ Approx. 7.6kg
● Accessories	Operation manual, AC cord, Rack mount brackets, CD-R (Layout Editor)

## Rear Panel



## External Dimensions



## FOR-A COMPANY LIMITED

Head Office : 3-8-1 Ebisu, Shibuya-ku, Tokyo 150-0013, Japan

FOR-A Corporation of America Corporate Office : 11155 Knott Ave., Suite G&H, Cypress, CA 90630, USA

FOR-A Corporation of America East Coast Office : 2 Executive Drive, Suite 670, Fort Lee Executive Park, Fort Lee NJ 07024, USA

FOR-A Corporation of America Distribution & Service Center : 2400 N.E. Waldo Road, Gainesville, FL 32609, USA

FOR-A Latin America & the Caribbean : 5200 Blue lagoon Drive, Suite 760, Miami, FL 33126, USA

FOR-A Corporation of Canada : 346A Queen Street West, Toronto, Ontario M5V 2A2, CANADA

FOR-A UK Limited : UNIT C71, Barwell Business Park, Leatherhead Road, Chessington Surrey, KT9 2NY, UK

FOR-A Italia S.r.l. : Via Volturmo, 37, 20047, Brughiero MB, ITALY

FOR-A Corporation of Korea : 801 Dansan Bld., 53-1 Dansan-dong, Youngdeungpo-gu, Seoul 150-800, KOREA

FOR-A China Limited : 708B Huateng Building, No. 302, 3 District, Jinsong, Chaoyang, Beijing 100021, CHINA

ISO 9001 and 14001 certified (Sakura R&D)

Homepage: <http://www.for-a.com/>

Tel : +81 (0)3-3446-3936 Fax : +81 (0)3-3446-1470

Tel: +1 714-894-3311 Fax: +1 714-894-5399

Tel: +1 201-944-1120 Fax: +1 201-944-1132

Tel: +1 352-371-1505 Fax: +1 352-378-5320

Tel: +1-305-931-1700 Fax: +1-305-264-7890

Tel: +1 416-977-0343 Fax: +1 416-977-0657

Tel: +44 (0)20-8391-7979 Fax: +44 (0)20-8391-7978

Tel: +39 039-881-086/103 Fax: +39 039-878-140

Tel: +82 (0)2-2637-0761 Fax: +82 (0)2-2637-0760

Tel: +86-(0)10-8721-6023 Fax: +86-(0)10-8721-6033