





MINIMUM REQUIREMENT

- CPU: Pentium 4 2.0 GHz
- System Memory: 512 MB
- Free Disk Space (for software installation): 15 MB
- Display mode: 1024*768, 32bits color
- Network card: 10/100 Base T Ethernet card
- Operating System: Windows XP SP2 (with Direct X 9.0c)
- Decklink card (SDI I/O only)

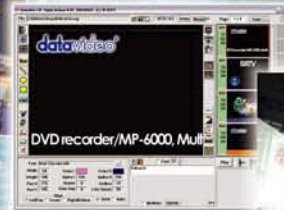
RECOMMEND SYSTEM

- CPU: Pentium 4 3.0 GHz or above
- System Memory: 1G MB or above
- Free Disk Space (for software installation): 15 MB
- Display mode: 1024*768, 32bits color
- Network card: 10/100 Base T Ethernet card
- Operating System: Windows XP SP2 (with Direct X 9.0c)
- Decklink SP, Pro, Extreme for SDI and YUV output, and Genlock input.

PC SYSTEM REQUIREMENTS FOR CG-100

Manufacturer	Blackmagic Design			
Model	DeckLink	DeckLink SP	DeckLink Pro	DeckLink Extreme
				
General Processing	4:2:2	4:2:2	4:2:2	4:2:2
Video Input				
Component	-	BNC x 3	-	BNC x 3
SDI	1	-	1	BNC x 1
Gen Lock/Reference	-	BNC x 1	BNC x 1	BNC x 1
Video Output				
Composite	-	BNC x 1(share Y)	BNC x 1(share Y)	BNC x 1(share Y)
Component	-	BNC x 3	BNC x 3	BNC x 3
SDI	1	-	BNC x 1	BNC x 1
SDI (Monitor)	1	BNC x 1	BNC x 1	-
Audio Input				
Un-balance	-	-	-	-
Balanced	-	XLR x 2	-	XLR x 2
ASE/EBU	-	-	-	-
SPDIF	-	-	-	-
Audio Output				
Un-balance	-	-	-	-
Balanced	-	XLR x 2	-	XLR x 2
ASE/EBU	-	-	-	-
SPDIF	-	RCA x 1	RCA x 4	RCA x 1
Remote Control				
RS422	Yes	Yes	Yes	Yes
Compatible				
NTSC/PAL	Yes	Yes	Yes	Yes
Window XP	Yes	Yes	Yes	Yes

**THE FIRST AFFORDABLE SDI CG SOLUTION
LIVE SDI TITLE / GRAPHIC / LOGO OVERLAY**



SDI DeckLink Card
CG-100 compatible with Blackmagic Design Decklink, Decklink SP, Decklink Pro, and Decklink Extreme cards.

www.blackmagic-design.com

SE-800

CG-100 can be used in any SDI or YUV input switchers. It can be also used in SE-800 via SDI text overlay interfaces.



FEATURES

- Image objects may be imported as graphics and stored as part of the page.
- Simple shapes (bars, ellipses and rectangles) are menu items and may be added to the page.
- Animation objects can Wipe, Push and Fade in various directions at different speeds.
- Text can roll and crawl.
- Supports Windows Unicode for multi-language inputs
- Redo/Undo functions for quick testing of an additional effect.
- Live editing mode provides a great flexibility to immediately alter other CG pages while one CG page is on the fly.
- Quick CG Text Editor allows navigation from page to page to modify text in a very productive way.
- Stand-alone logo display function.
- Nine clipboard spaces can store and be retrieved CG combinations from different pages and files.
- Group function makes CG combinations easy to be edited.
- SDI & YUV available.

SDI overlay offers the best, broadcast quality, CG solution in the industry today. However, it has always been beyond the budget of small studios and production houses - The Datavideo CG-100 has changed that!

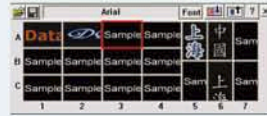
The CG-100 combines with a Blackmagic Design Decklink Card to bring you live SDI CG overlay at an affordable price. It supports NTSC and PAL video standards and is able to generate graphics for 16:9 or 4:3 aspect ratios. Pages can be composed and combined with animation effects, to run as a sequence, or they can be displayed and edited live. The CG-100 combines perfectly with the SE-800 to give superb quality graphics / text / logo overlay on live production mixes.

APPLICATION

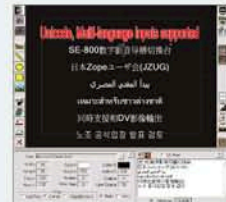
- TV stations, production house, small studios, and post production company.
- Any company that does voice over and translation needs to put on sub-titles.
- Schools, churches, and conference rooms.

CG-100 INTERFACE

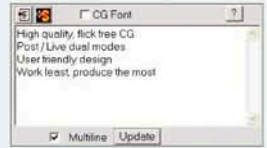
- 1 Open file
- 2 New file
- 3 Save file
- 4 NTSC/PAL, 16:9/4:3 setting
- 5 Safety Margin setting
- 6 Page Info
- 7 Clip board
- 8 Animation Tools
- 9 Playback by sequence
- 10 Insert an empty page
- 11 Copy a page
- 12 Delete a page
- 13 Edit Logo
- 14 Logo on/off
- 15 Texts and Images editing window
- 16 Extra Editing Tools
- 17 Graphics Tools
- 18 Editing Tools (Front/Back, Undo, Redo, Delete...etc.)



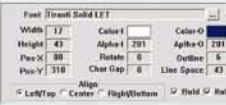
Often used texts template
Save your frequently used text styles as a template, which includes color, transparency, outline and font information.



UNICODE
CG-100 is based on Unicode. Multi-language inputs supported.



Multi-line input
Type multiple text lines, copy and paste text from Word, or import a .txt file.



Text and Graphic editing tools
Adjustments include: Size, color, transparency, border, gap, position, alignment and line spacing.

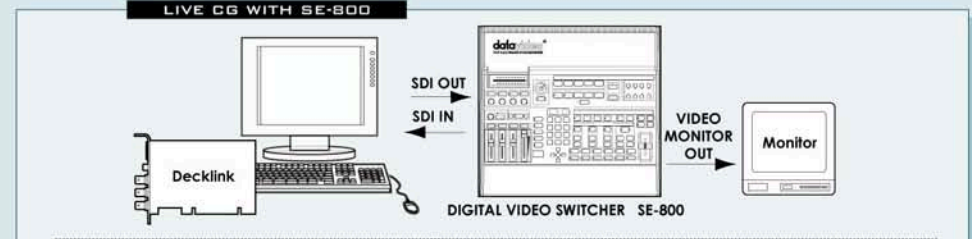
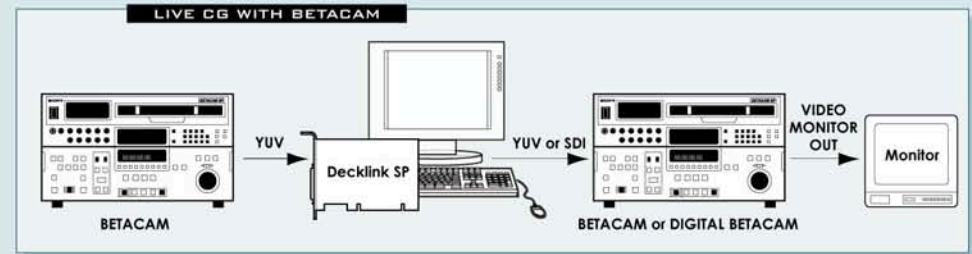
On air and editing at the same time
The live button allows pre-edited pages to be displayed live on air, while other pages are being edited for future use.

Animation tools
WIPE, FADE, PUSH, DISPLAY, ROLL and CRAWL transition effects can be programmed for each page. Settings include direction, duration and pause.

No.	Animation ID	Type	Speed	Dir	Pause	Priority	Function/Run-time
1	Wipe	In	Left	0	0	0.5s	NTSC, Y154 / PAL, H55
2	Wipe	In	Left	0	0	0.5s	NTSC, Y154 / PAL, H55
3	Wipe	In	Left	0	0	0.5s	NTSC, Y154 / PAL, H55
4	Wipe	In	Left	0	0	0.5s	NTSC, Y154 / PAL, H55
5	Wipe	In	Left	0	0	0.5s	NTSC, Y154 / PAL, H55
6	Wipe	Out	Right	0	0	0.5s	NTSC, Y154 / PAL, H55



Sequence play
Completed CG sequences can be stored and played as an automatic sequence.



Support high quality SDI video input and output
The SE-800 SDI overlay connectors allow high quality text and graphics to be added to any of the outputs of the SE 800.

SE-800 REAR PANEL: SDI OVERLAY IN, SDI OVERLAY OUT, SDI OUT DV OUT, VIDEO OUT FOR MONITORING

SDI OVERLAY CARD

